



Registration for NSSE and FSSE 2019 is now open!

Photo courtesy of Queens University of Charlotte

ANNOUNCEMENTS

Go in depth »

NSSE Institutional Report 2018 ready!

Nearly 290,000 students from 511 institutions in the US, Canada, and 6 other countries completed the survey. See a sample report package [here](#).

Beginning College Survey of Student Engagement (BCSSE) registration is still open!

NSSE at AIR Forum 2018

May 29—June 1 Orlando FL
[View NSSE sessions & NSSE-related events](#)

Annual Results 2017: Findings about Inclusive Practice

Students in courses with more inclusive practices reported greater learning and engagement. [Read more ...](#)

Pairing NSSE and the VALUE Institute

The Association of American Colleges and Universities (AAC&U) and Indiana University's Center for Postsecondary Research (IU CPR) announced the launch of the **VALUE Institute**, a resource for higher education institutions to document, report, and use learning outcomes evidence to improve student success in college. The VALUE Institute, in tandem with IU CPR's National Survey of Student Engagement (NSSE), will create a comprehensive resource for direct and indirect evidence of student learning in higher education [Read more ...](#)

NSSE 2017 Major Field Report, FSSE 2017 Disciplinary Area Report available

VIEW NSSE SIGHTINGS: A BLOG OF ENGAGEMENT-RELATED FINDINGS



NSSE in ACTION

“When it aligns to learning outcomes, NSSE provides a useful source of indirect assessment data with comparison information from other schools.”

Tracy Williams, Director of Institutional Effectiveness, Hamline University



FEATURED RESOURCE

Read how 23 institutions used their NSSE results in *Lessons from the Field—Volume 4: Digging Deeper to Focus and Extend Data Use*.

NSSE

National Survey of Student Engagement

FSSE

Faculty Survey of Student Engagement

BCSSE

Beginning College Survey of Student Engagement

NSSE Institute

For Effective Educational Practice

WHO'S PARTICIPATING

Enter all or part of an institution's name:

[Advanced Search »](#)

ANNUAL RESULTS

Findings from NSSE, FSSE, and BCSSE administrations

INSTITUTIONAL REPORTING

Examples of NSSE's standard reports

ENGAGEMENT INDICATORS AND HIGH IMPACT PRACTICES

Learn about [EI measures](#) and [HIP items](#)

NSSE REPORT BUILDER

Display NSSE results by user-selected student and institutional characteristics. Two versions are available: *Public Version* and *Institution Version*.

PUBLICATIONS & PRESENTATIONS

View featured publications and recent presentations. Search by topic and year.

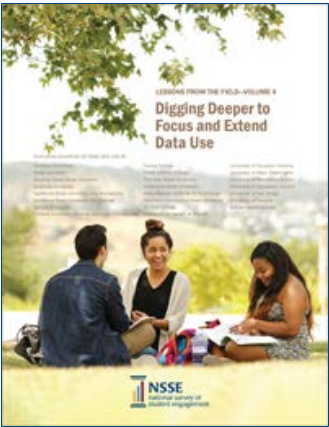
NSSE SIGHTINGS

Because good research on engagement should not be hard to find.

WEBINARS

Register for and view webinars on the NSSE Institutional Report, Response Rates and more.

HOW INSTITUTIONS USE NSSE



2017 participants may now download the NSSE *Major Field Report* and the FSSE *Disciplinary Area Report* from the **Institution Interface**.

New Topical Module Local Administration Option

Administer Topical Modules during your NSSE "off-year." **Learn more** about this new option for more tailored assessment and improvement activities.

All Students To Receive Sexual Orientation Question

Beginning in 2017, NSSE will include the demographic question about sexual orientation for all respondents.

Update on ACE and NSSE surveys on internationalization and global learning

ACE and **NSSE** are studying the relationship between institutional internationalization efforts and students' global learning.
Read more ...

Refreshing Engagement: NSSE at 13

Read the *Change* magazine Editor's Choice article summarizing lessons from NSSE's first 13 years and features of the updated survey.
Read more ...

Announcements in Depth »

 [Facebook](#)

 [VSA program](#)

More than 500 examples in a searchable database

PSYCHOMETRIC PORTFOLIO

View studies of NSSE's reliability, validity, and data quality.

NSSE NEWSLETTER

NSSE eNews is a periodic electronic newsletter to keep NSSE users and others informed about project activities.

